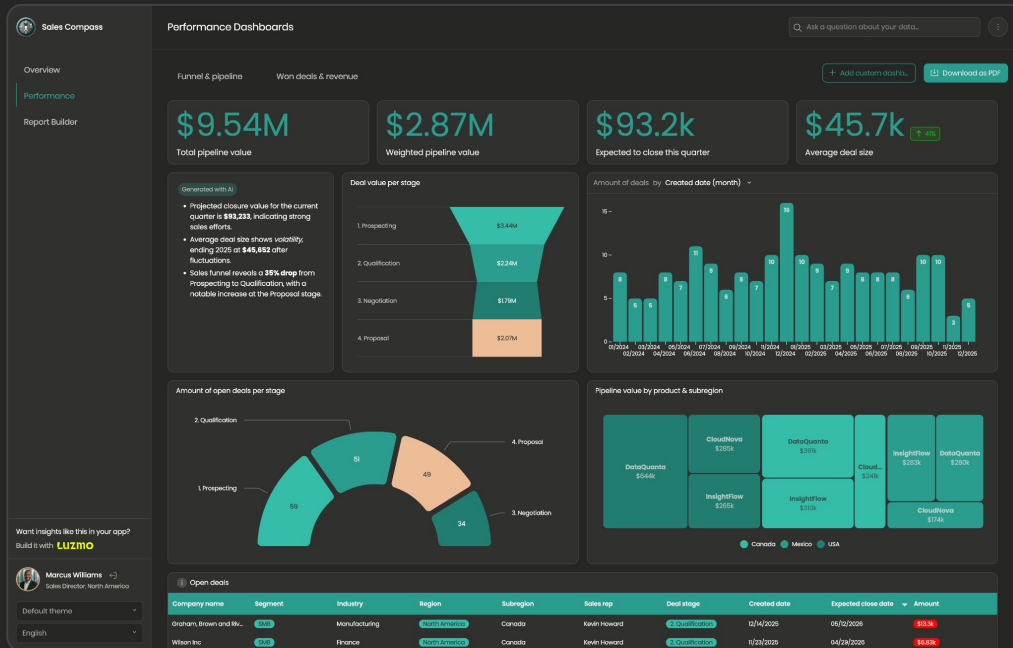


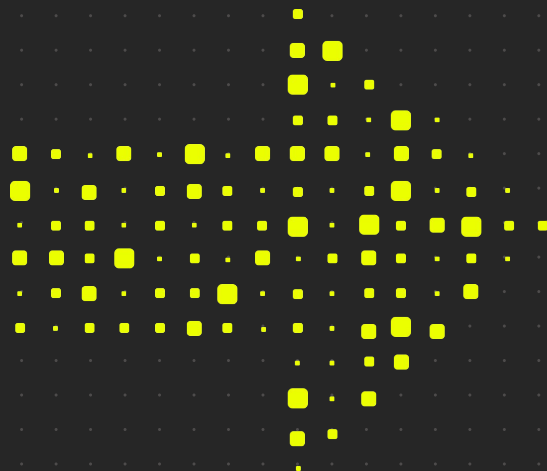
LUZMO

Roadmap 2026-Q2



Luzmo

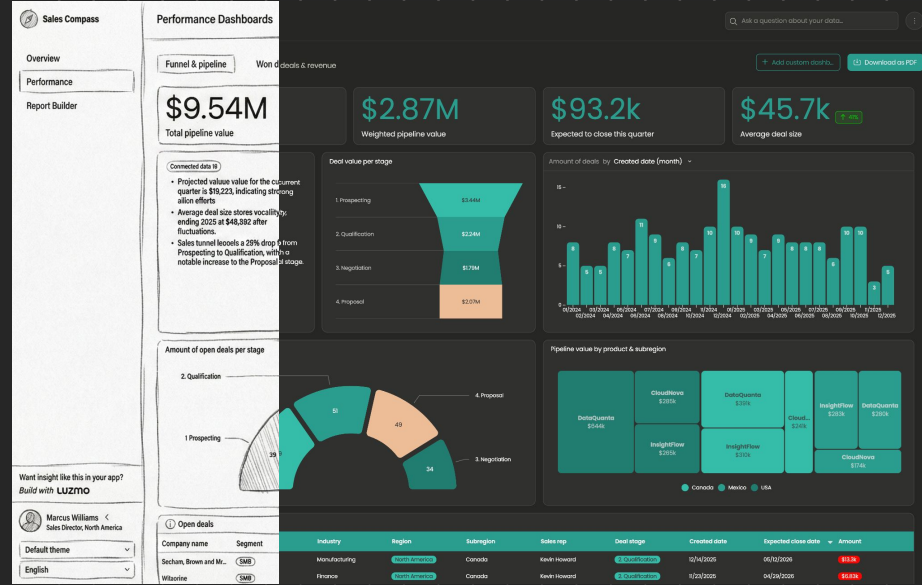
Our focus



Luzmo

The fastest way to embed analytics

Quick time-to-market with high customization

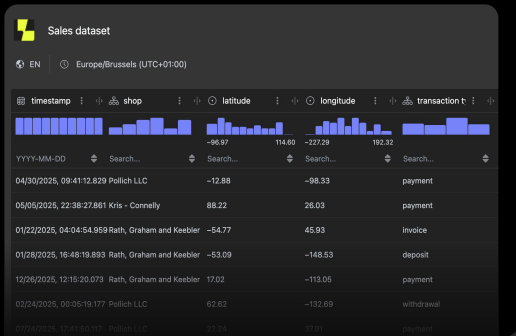




The fastest route to embedded analytics

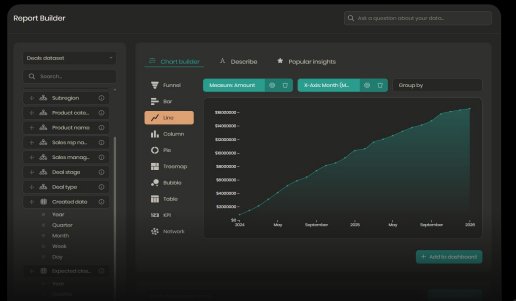
Prepare: Effortless embed-ready data

Make your data instantly ready, understandable, and trustworthy for humans and AI.



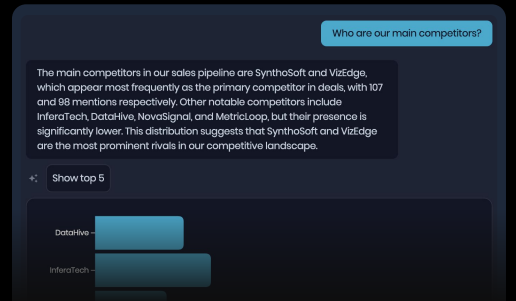
Create: Native-feeling visuals anyone can build

The composable layer for native-feeling data products, empowering anyone to create beautiful and insightful charts.



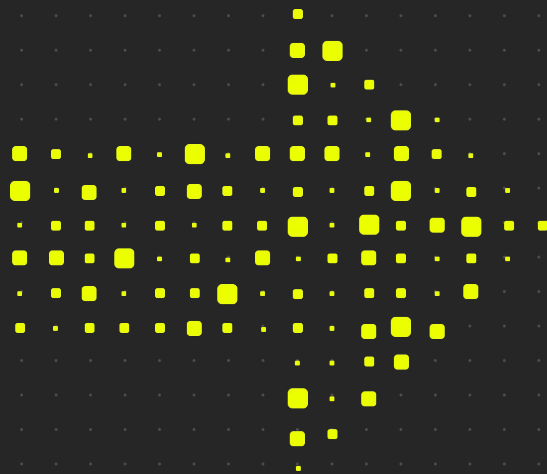
Engage: Truly self-serve analytics for end users

Help every end-user understand, personalize, and act on data, without relying on data analysts or static dashboards.



Luzmo

What we shipped



Luzmo IQ V3

Answer more complex questions with higher consistency

- Answer correctness increased by 56%.
- Relevant chart creation increased with 20%.

Other improvements:

- Better formatting of text.
- Improve search and filtering for queries.

How to get access

- Reach out to your CSM or our support team to try Luzmo IQ access get access now.



Luzmo Studio

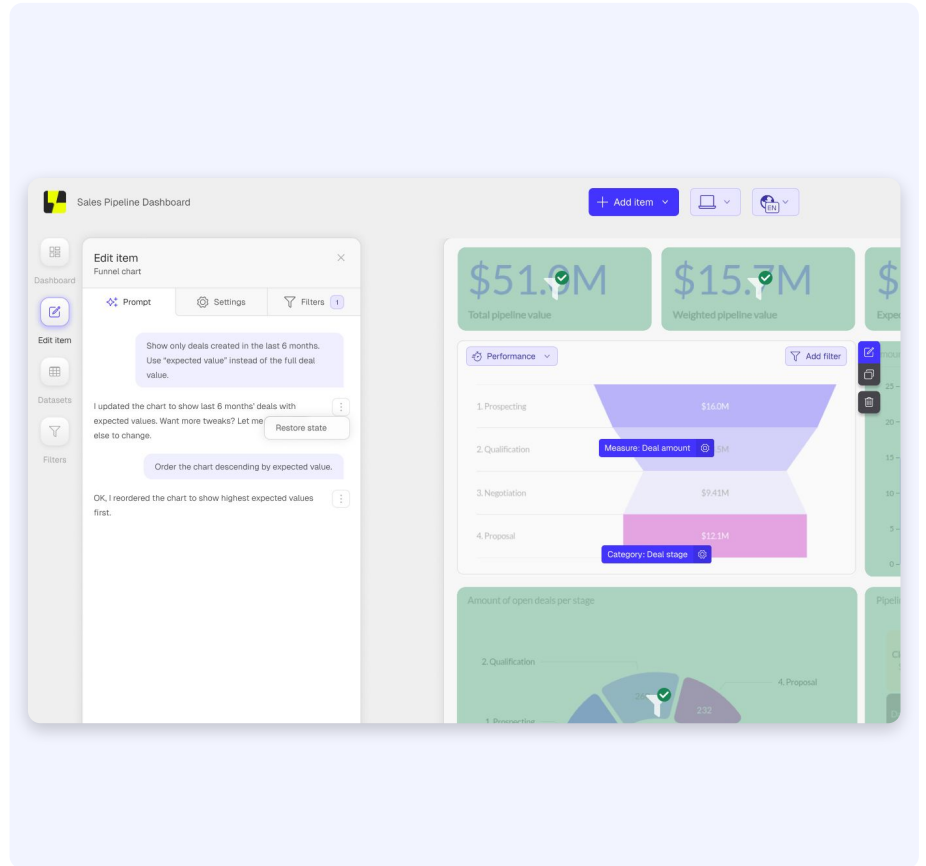
Refreshed Studio user interface

Modern look and feel, reduced clutter for a more focussed dashboard building experience.

Build and edit charts in minutes

Speed up chart building through natural language workflows.

Included by default in Professional plans and higher



Analytics Components Kit

- Build any data app. Build any UI/UX, while using Luzmo components to handle the analytics.
- Ship faster: Pre-built components for data selection, chart config, and styling mean weeks of dev work replaced by configuration

Available as add-on

The image displays a collection of pre-built analytics components from the Luzmo Analytics Components Kit, arranged in a grid-like layout. Each component is shown with a title, a brief description, and a visual example of its use.

- luzmo-data-field**: Represents a single data column or measure that can be dragged onto chart slots. Example: A dropdown menu with "Region" selected.
- luzmo-item-slot-drop**: Drop target where data fields land to define what a chart displays (e.g., its measure). Example: A green bar labeled "Measure: Amount".
- luzmo-item-slot-picker**: Dropdown to select which data columns power a chart slot – no dragging needed. Example: A dropdown menu with "Measure: Amount" selected.
- luzmo-data-field-panel**: Browseable list of all available columns and measures from your datasets. Example: A list of fields including Deal ID, Company name, Company industry, Company segment, Region, Subregion, Product category, Product name, Sales rep name, Sales manager name, Deal stage, Deal type, and Created date.
- luzmo-item-grid**: Dashboard grid that renders multiple charts in a resizable, repositionable layout. Example: A grid containing a horizontal bar chart, a line chart, a donut chart, and a treemap chart.
- luzmo-vis-item**: A standalone chart rendered via dynamic configuration. Example: A horizontal bar chart showing data for Asia-Pacific, Europe, and North America.
- luzmo-filters**: Filter editor for building nested AND/OR conditions that narrow down chart data. Example: A filter editor showing "Subr..." eq "East..." with a "Group" button.
- luzmo-item-slot-drop-panel**: All drag-and-drop slots for a chart type in one panel, with automatic constraint handling. Example: A panel with three slots: "Category: Region", "Measure: Amount", and "Group by: Created date".
- luzmo-item-slot-picker-panel**: All dropdown pickers for a chart type in one panel – a mobile-friendly alternative to drag-and-drop. Example: A panel with dropdowns for "Category", "Region", "Measure", "Amount", "Group by", and "Created date".

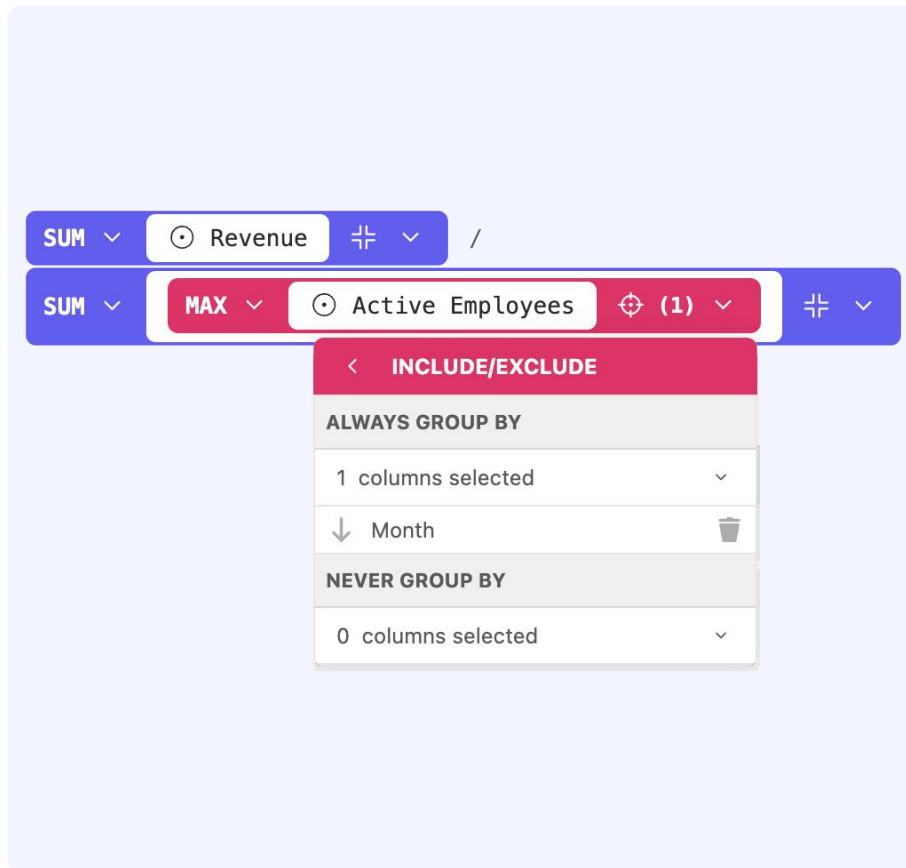
Nested aggregations BETA*

Unlock advanced calculations directly in Luzmo

- Build metrics that require aggregation on top of aggregation
- Reduce the need for warehouse-side workarounds
- Make advanced grouping logic much more powerful

Included by default in Professional plans and higher

- * BETA limited to pushdown-native connectors



Scaling Luzmo

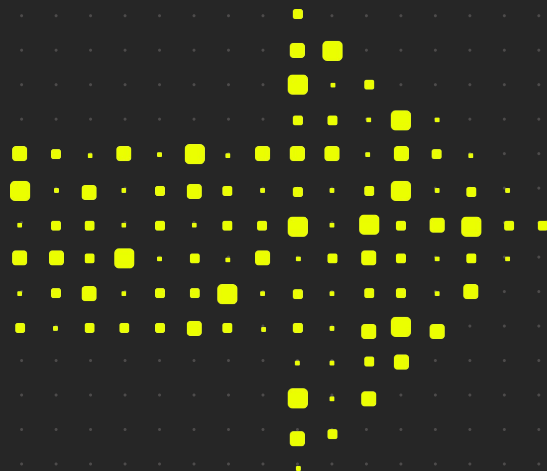
Improve scalability of our platform

- Reduced number of open issues by 35%
- Reduced number of issues introduced by 37%

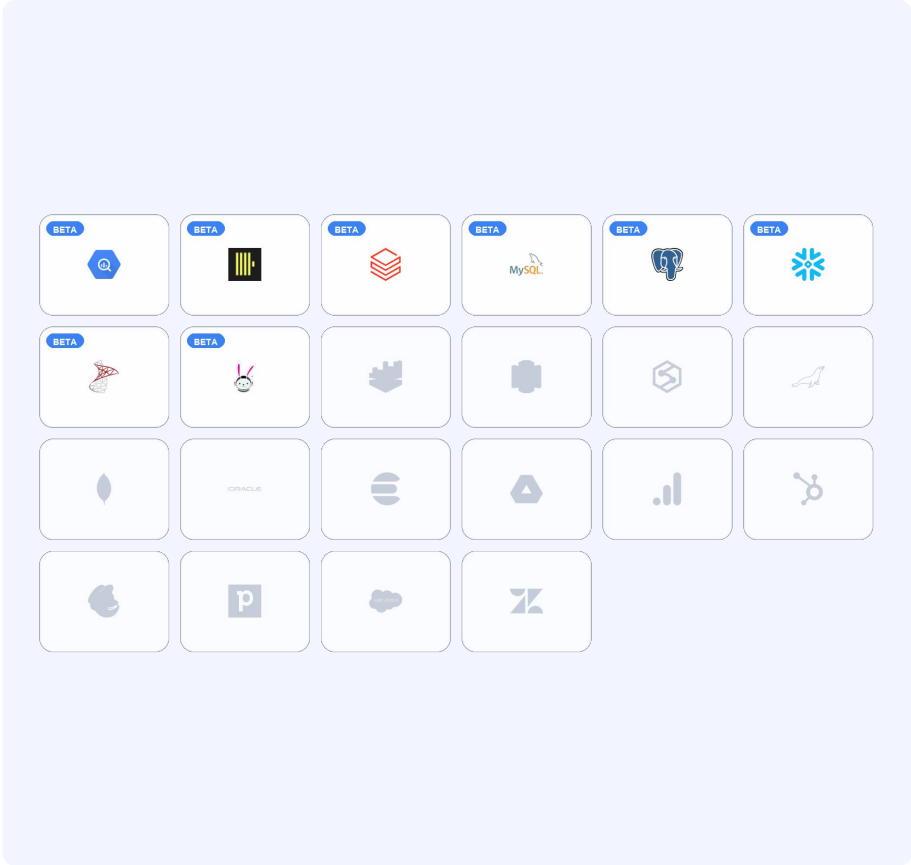


Luzmo

Coming in Q2



Nested Aggregations

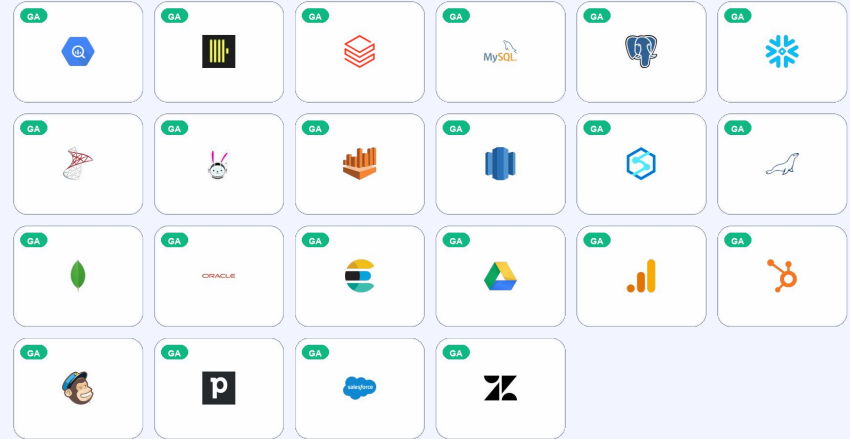


Nested Aggregations

General Availability Release

- Available for all connectors
- Lifting all beta limitations

Included by default in Professional plans and higher

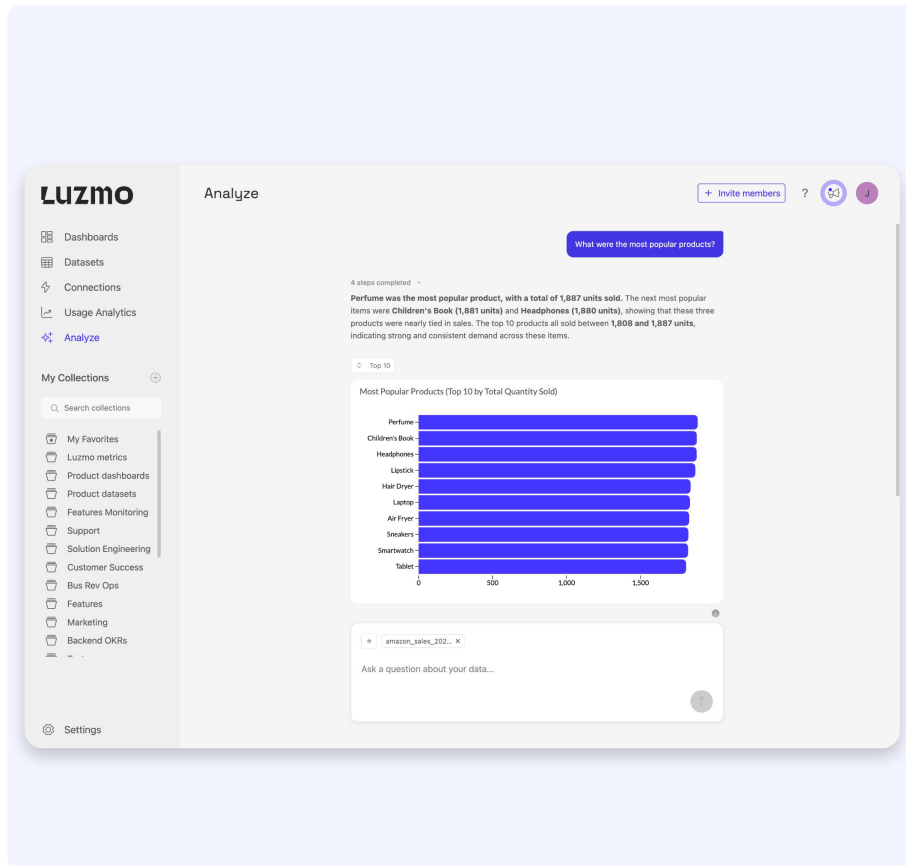


Analyze with Luzmo IQ

Work with your data the agentic way, directly in Luzmo

- Converse with your data to experience it through your users' eyes.
- Play with your data to test it for agentic use.
- Powered by Luzmo IQ.

Included by default in Professional plans and higher



Dashboard Agent

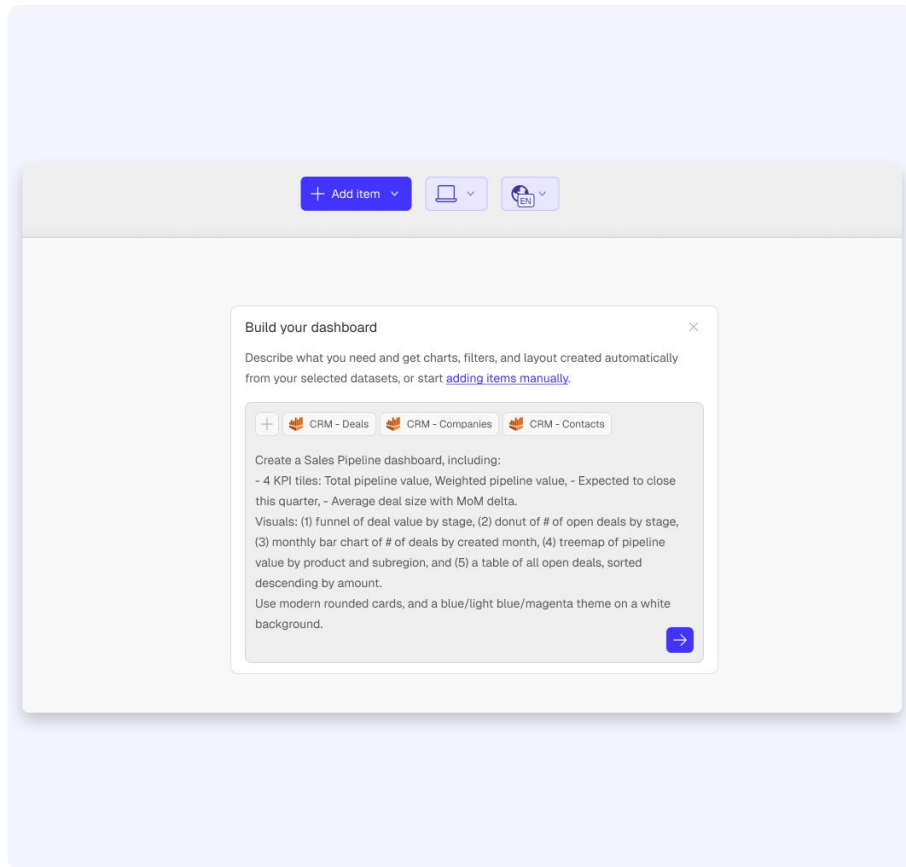
Go from idea to full dashboard in seconds

Describe charts, KPIs, filters, and theme in a single prompt, and the agent builds a complete dashboard from your selected datasets.

Generate, then make it yours

The output is an editable Luzmo dashboard. Edit it manually, iterate with follow-up prompts, or both.

Included by default in Professional plans and higher



Scaling Luzmo

Active users of embedded dashboards and visualizations grew by **35%** YoY



LUZMO

Q & A

Submit ideas via our Roadmap page:

<https://www.luzmo.com/roadmap>

